

ENERGIA AZALEA 99,965 DWT Bulk Carrier 26[Contents](#)[By Builder](#)[By Ship Type](#)**PRINCIPAL PARTICULARS**

Length (o.a.)	234.92 m	Gross tonnage	58,773	Complement	25
Breadth (mld.)	43.00 m	Deadweight	99,965 t	Classification	Nippon Kaiji Kyokai (NK)
Draft (mld.)	13.58 m	Main engine	MAN B&W 6S60ME-C10.5-EGRBP	Builder	Namura Shipbuilding Co., Ltd.

KUROTAKISAN MARU III 89,999 DWT Bulk Carrier 27

[Contents](#)

[By Builder](#)

[By Ship Type](#)



KUROTAKISAN MARU III 89,999 DWT Bulk Carrier 27

[Contents](#)
[By Builder](#)
[By Ship Type](#)

Oshima Shipbuilding Co., Ltd. delivered KUROTAKISAN MARU III, a 89,999-DWT bulk carrier, to NOVA TRANSPORT INC. in December 2021.

Features

1. Double hull structure and Box type cargo hold with top-side tanks to improve coal unloading efficiency.
2. Elimination of the use of ballast water in cargo holds to reduce the risk of salt, rust, and other contaminants in cargo holds.
3. Advanced Flipper Fins & Rudder Fin which improve propulsion efficiency are installed.

PRINCIPAL PARTICULARS

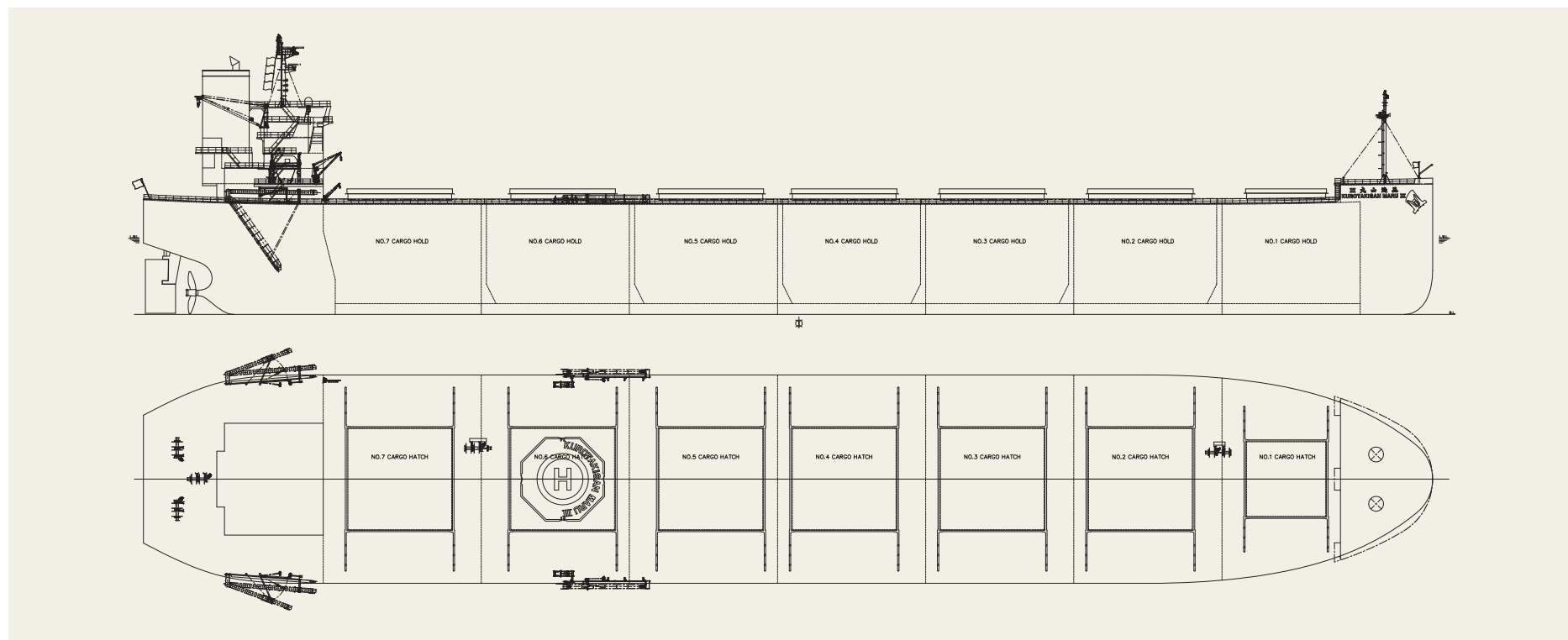
Length (o.a.)	234.96 m
Breadth (mld.)	38.00 m
Depth (mld.)	20.05 m
Draft (mld.)	13.86 m
Gross tonnage	51,793
Deadweight	89,999 MT

Main engine	J-ENG UE 6UEC60LSE-Eco-A2-EGR
MCR (kw x rpm)	9,700 kW x 84.0 rpm
Speed (service)	14.00 knots
Complement	25
Classification	NK
Loading capacity (grain)	107,260 m ³
Builder	Oshima Shipbuilding Co., Ltd.

4. Special bow form, Seaworthy Bow improves speed performance in rough sea conditions as compared to

ordinary bows.

5. SOx scrubber is installed for environmental friendliness.



TAHO EUDAIMONIA 84,460 DWT Bulk Carrier 28

[Contents](#)

[By Builder](#)

[By Ship Type](#)



TAHO EUDAIMONIA 84,460 DWT Bulk Carrier 28

Contents By Builder By Ship Type

Oshima Shipbuilding Co., Ltd. delivered TAHO EUDAIMONIA, a 84,460-DWT bulk carrier, to THC INTERNATIONAL S.A. in February 2022.

Features

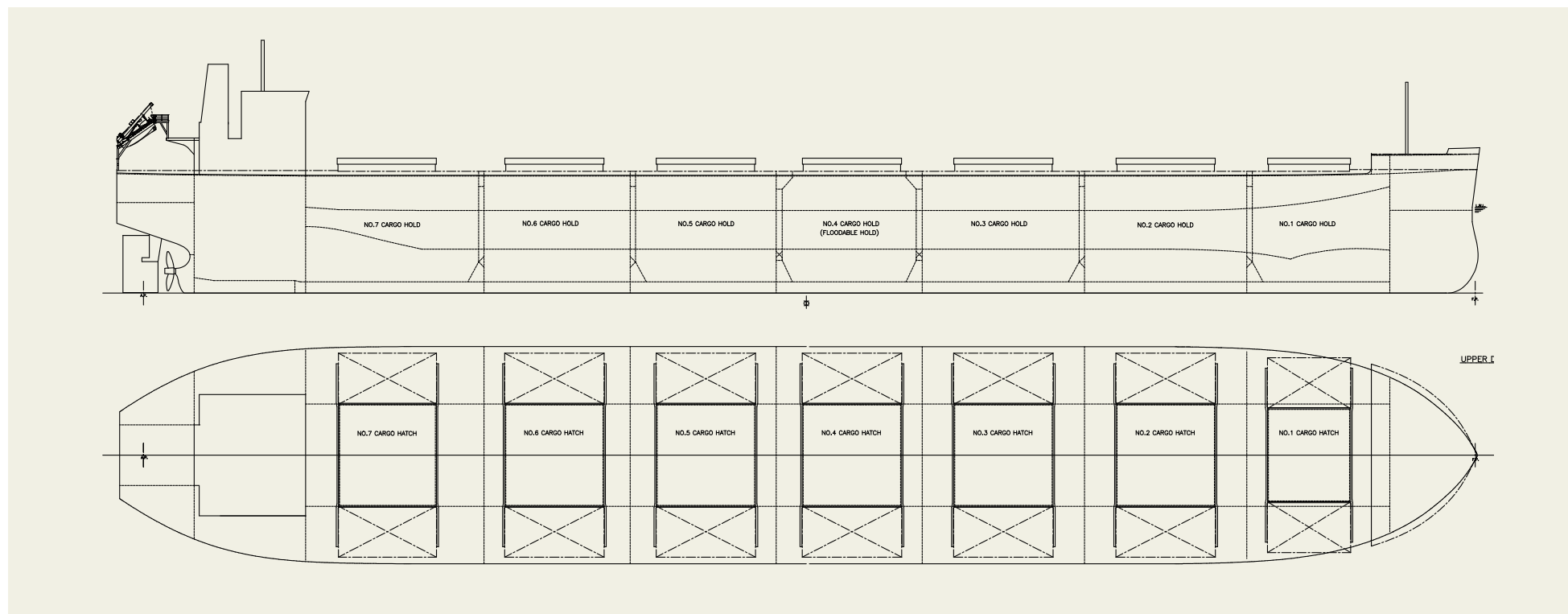
1. This vessel has an optimized hull form for carrying a variety of cargoes, such as grain, ore, coal and steel slab or steel billet and large deadweight(84,460 MT) with shallow draft (13.95 m)
2. Wide hatch cover improves cargo handling efficiency.
3. Advanced Flipper Fins & Rudder Fin which improve propulsion efficiency are installed.

PRINCIPAL PARTICULARS

Length (o.a.)	228.41 m
Breadth (mld.)	36.50 m
Depth (mld.)	19.89 m
Draft (mld.)	13.95 m
Gross tonnage	46815
Deadweight	84,460 MT

Main engine	MITSUI MAN B&W 6S60ME-C8.5-EGRBP
MCR (kw x rpm)	9,120 kW x 84.0 rpm
Speed (service)	14.10 knots
Complement	25
Classification	ABS
Loading capacity (grain)	102,988 m ³
Builder	Oshima Shipbuilding Co., Ltd.

4. Special bow form, Seaworthy Bow improves speed performance in rough sea conditions as compared to ordinary bows.



CEMTEX EXCELLENCE 99,990 DWT Bulk Carrier 29

[Contents](#)

[By Builder](#)

[By Ship Type](#)



CEMTEX EXCELLENCE 99,990 DWT Bulk Carrier 29

Contents By Builder By Ship Type

Oshima Shipbuilding Co., Ltd. delivered CEMTEX EXCELLENCE, a 99,990-DWT bulk carrier, U-Ming Marine Transport Corporation in March 2022.

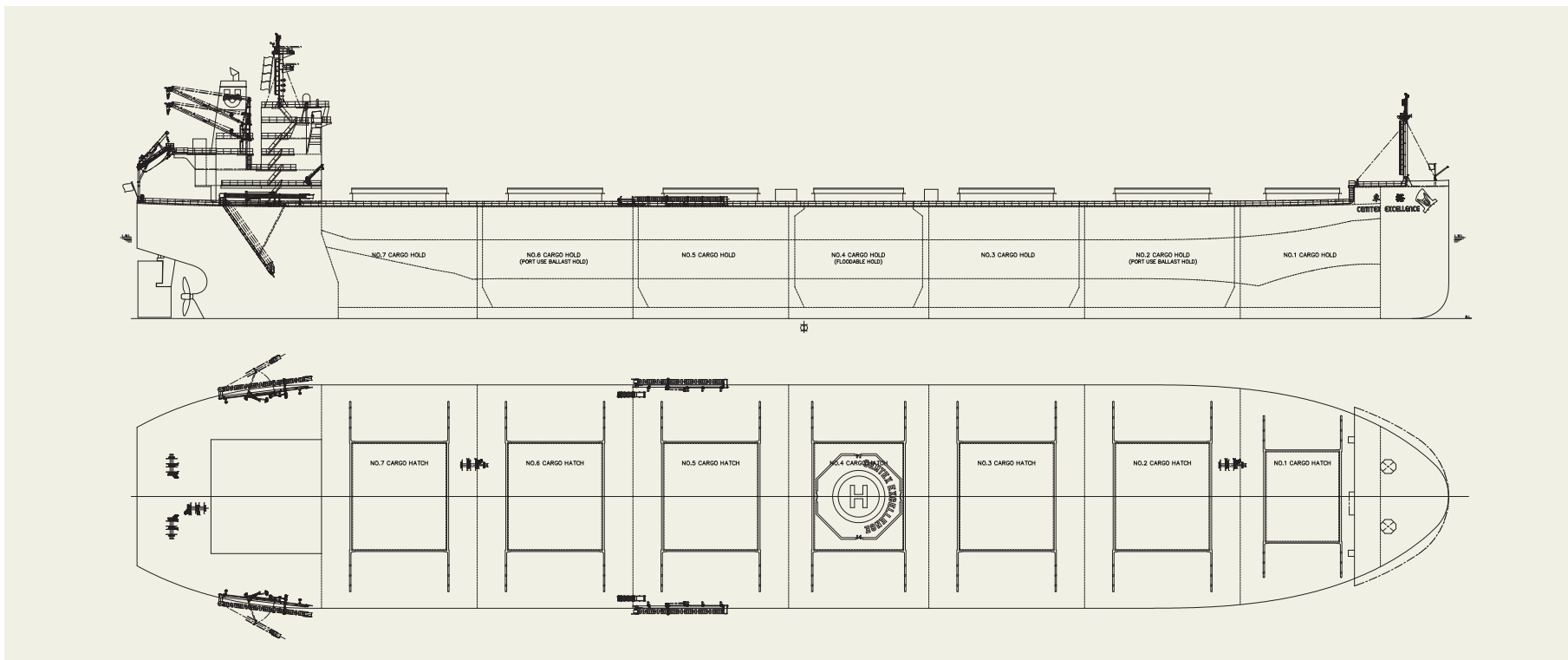
Features

1. This vessel has a wider width (40.0 m) and larger cargo hold that allow to carry more cargo than a vessel with the approximately same DWT.
2. Wide hatch cover improves cargo handling efficiency.
3. Advanced Flipper Fins & Rudder Fin which improve propulsion efficiency are installed.
4. Special bow form, Seaworthy Bow improves speed

PRINCIPAL PARTICULARS

Length (o.a.)	235.00 m	MCR (kw x rpm)	10,000 kW x 76.0 rpm
Breadth (mld.)	40.00 m	NOR (kw x rpm)	7,810 kW x 70.0 rpm
Depth (mld.)	20.00 m	Speed (service)	14.30 knots
Draft (mld.)	14.415 m	Complement	25
Gross tonnage	54244	Classification	NK/CR
Deadweight	99,990 MT	Loading capacity (grain)	118,908 m ³
Main engine	MITSUI-MAN B&W 6G60ME-C10.5	Builder	Oshima Shipbuilding Co., Ltd.

performance in rough sea conditions as compared to ordinary bows.



SHOFU MARU 100,422 DWT Bulk Carrier 30

[Contents](#)

[By Builder](#)

[By Ship Type](#)



SHOFU MARU 100,422 DWT Bulk Carrier 30
[Contents](#)
[By Builder](#)
[By Ship Type](#)

Oshima Shipbuilding Co., Ltd. delivered SHOFU MARU, a 100,422-DWT bulk carrier, to Mitsui O.S.K. Lines, Ltd. in October 2022.

Features

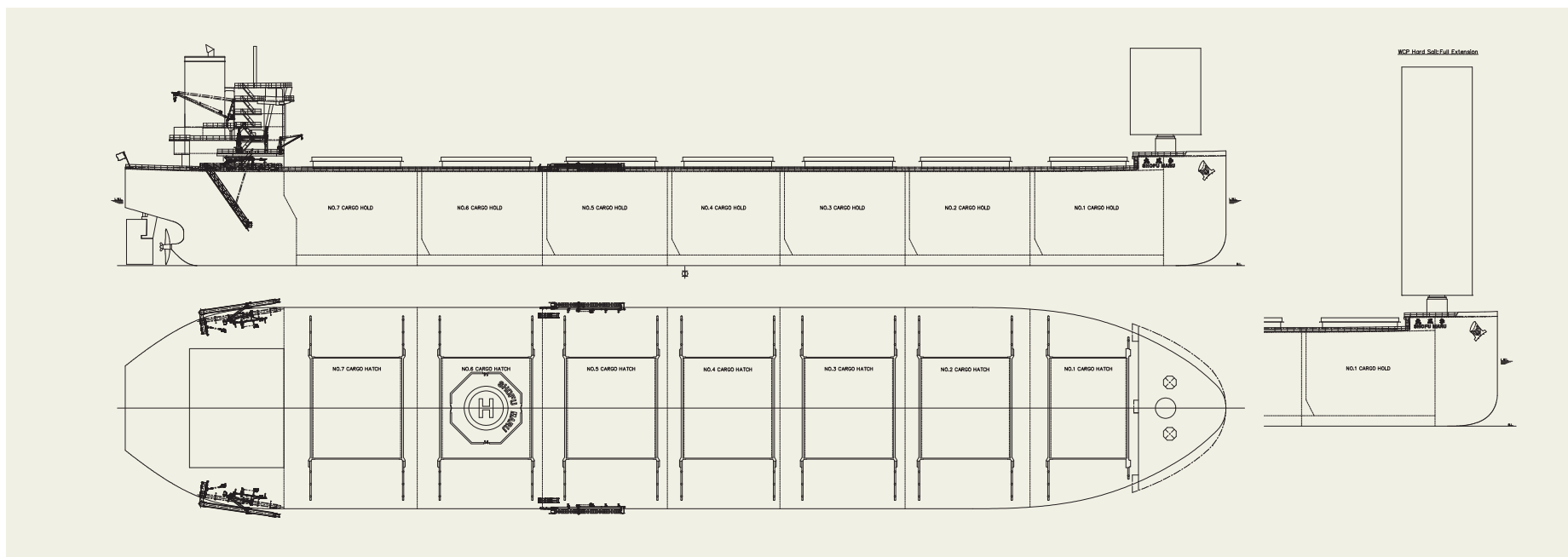
1. This is the 1st delivered vessel with a hard sail, so-called "Wind Challenger," which is wind power propulsion system.
2. The hard sail which consist of three FRP (Fiber Reinforced Plastics) sails and one steel sail is extended and reefed automatically in response to the wind conditions and ship motion.
3. The height of the sail from the main deck is about 53m with all sails fully extended and is about 20m with all sails reefed, and the direction of the sail can rotate 180 degrees.

PRINCIPAL PARTICULARS

Length (o.a.)	235.00 m
Breadth (mld.)	43.00 m
Depth (mld.)	20.05 m
Draft (mld.)	13.88 m
Gross tonnage	58209
Deadweight	100,422 MT

Main engine	MITSUI MAN B&W 6S60ME-C10.5-EGRBP
MCR (kw x rpm)	9,180 kW × 84.0 rpm
Speed (service)	14.30 knots
Complement	25
Classification	NK
Loading capacity (grain)	115,304 m ³
Builder	Oshima Shipbuilding Co., Ltd.

4. The width of the sail is about 15m and complies with SOLAS regulation for visibility from wheel house.
5. By slewing in an appropriate direction, a large amount of wind forces is converted into the propulsive force of the ship and reduce fuel consumption.
6. Advanced Flipper Fins & Rudder Fin which improve propulsion efficiency are installed.
7. Special bow form, Seaworthy Bow improves speed performance in rough sea conditions as compared to ordinary bows.



CLIMATE RESPECT 87,290 DWT Bulk Carrier 31

[Contents](#)

[By Builder](#)

[By Ship Type](#)



CLIMATE RESPECT 87,290 DWT Bulk Carrier 31

Contents By Builder By Ship Type

Oshima Shipbuilding Co., Ltd. delivered CLIMATE RESPECT, a 87,290-DWT bulk carrier, to LOFOU SHIPPING CORPORATION in July 2022.

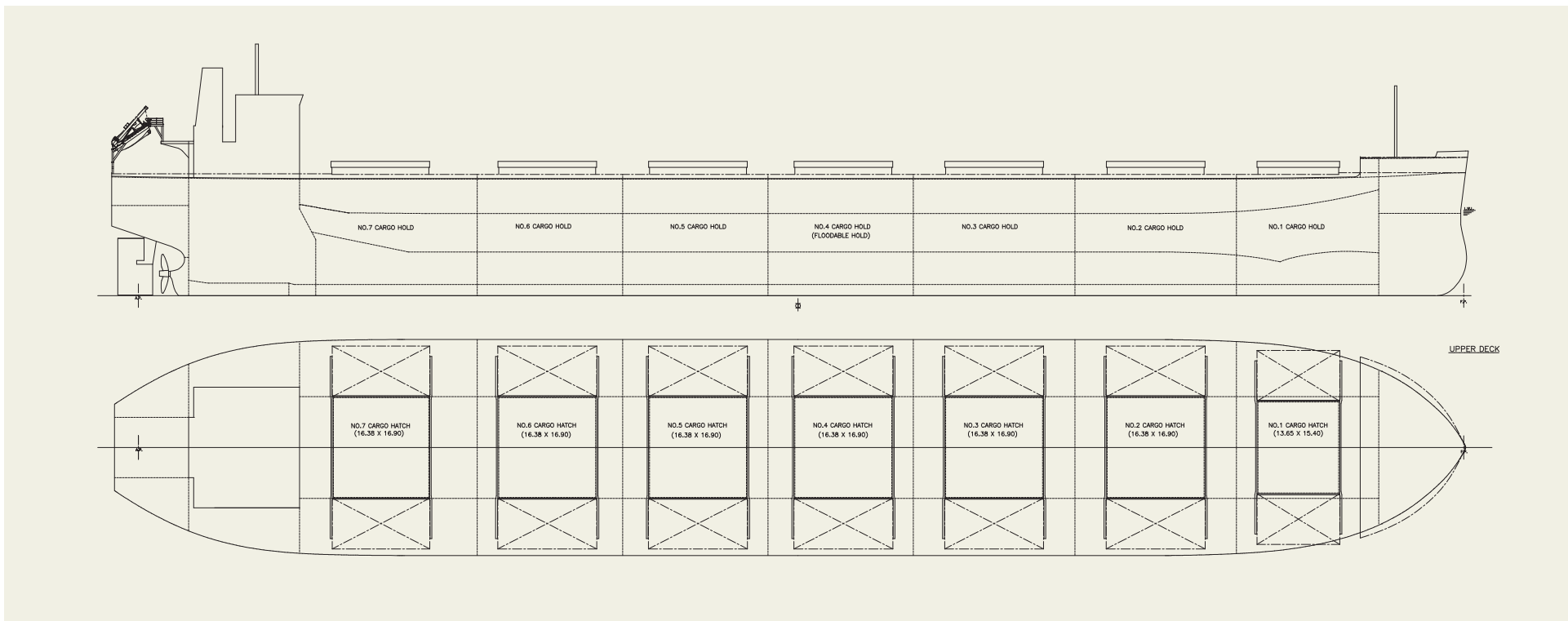
Features

1. This vessel has an optimized hull form for carrying grain, ore, and coal, and large deadweight (87,290 MT) with shallow draft (14.322m)
2. Wide hatch cover improves cargo handling efficiency.
3. Advanced Flipper Fins & Rudder Fin which improve propulsion efficiency are installed.
4. Special bow form, Seaworthy Bow improves speed

PRINCIPAL PARTICULARS

Length (o.a.).....	228.41 m	Main engine	MITSUI MAN B&W 5S60ME-C10.5-EGRBP
Breadth (mld.).....	36.50 m	MCR (kw x rpm)	8,180 kW x 84.0 rpm
Depth (mld.).....	20.39 m	Speed (service).....	14.30 knots
Draft (mld.).....	14.322 m	Complement.....	25
Gross tonnage.....	48233	Classification.....	NK
Deadweight.....	87,290 MT	Loading capacity (grain).....	106,222 m ³
		Builder.....	Oshima Shipbuilding Co., Ltd.

performance in rough sea conditions as compared to ordinary bows.



SHOHO MARU III 89,992 DWT Bulk Carrier 32

[Contents](#)

[By Builder](#)

[By Ship Type](#)



SHOHO MARU III 89,992 DWT Bulk Carrier 32

Contents By Builder By Ship Type

Oshima Shipbuilding Co., Ltd. delivered SHOHO MARU III , a 89,992-DWT bulk carrier, to OREGANO LINE S.A. in August 2023.

Features

1. This vessel has an optimized hull form for carrying coal, and large deadweight(89,992 MT) with shallow draft (13.839m)
2. Advanced Flipper Fins & Rudder Fin which improve propulsion efficiency are installed.
3. Special bow form, Seaworthy Bow improves speed

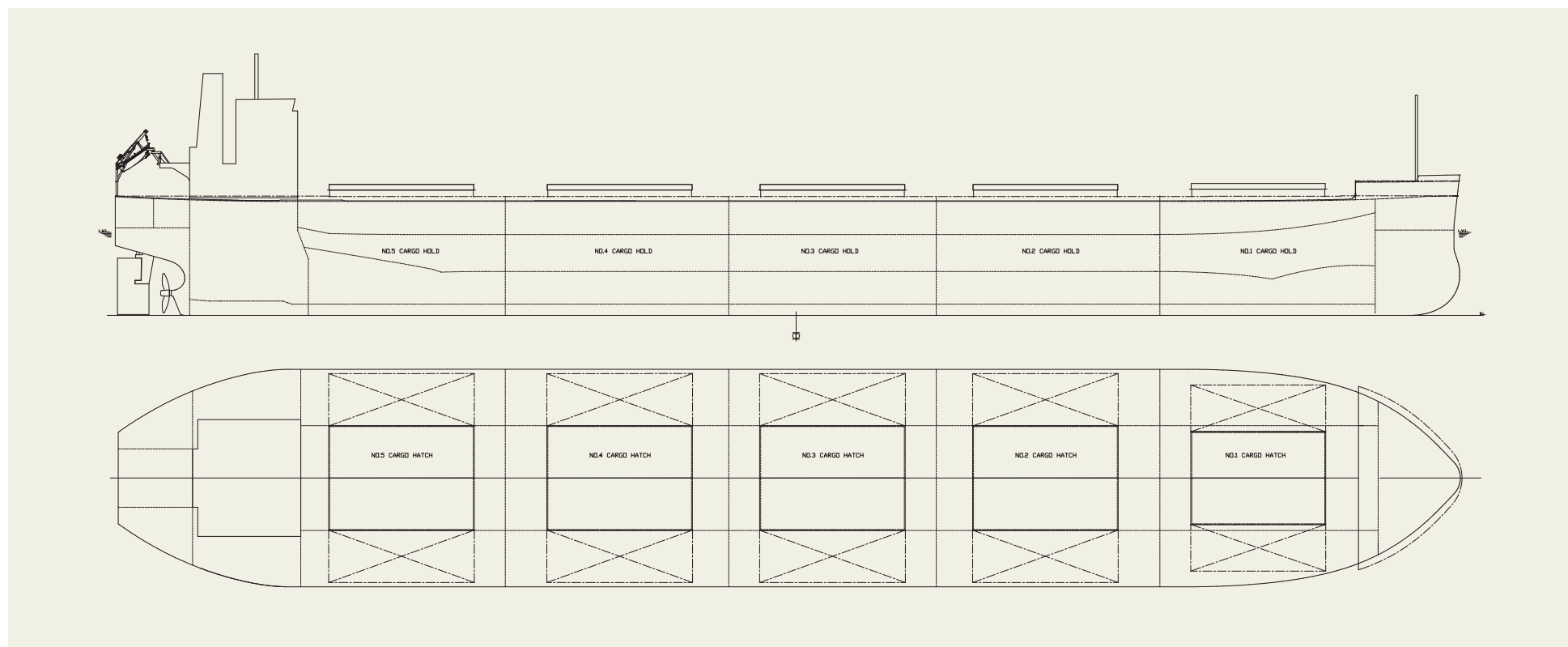
PRINCIPAL PARTICULARS

Length (o.a.)	234.98 m
Breadth (mld.).....	38.00 m
Depth (mld.).....	19.91 m
Draft (mld.).....	13.839 m
Gross tonnage.....	51027

Deadweight.....	89,992 MT
Main engine	MITSUI MAN B&W 6S60ME-C10.5-EGRBP
MCR (kw x rpm)	9,000 kW x 84.0 rpm
Speed (service).....	14.30 knots
Loading capacity (grain).....	110,529 m ³
Builder.....	Oshima Shipbuilding Co., Ltd.

performance in rough sea conditions as compared to ordinary bows.

4. Class NK's notation of "EA (Environmental Awareness)" is assigned.



KAGURA 99,990 DWT Bulk Carrier 33

[Contents](#)

[By Builder](#)

[By Ship Type](#)



KAGURA 99,990 DWT Bulk Carrier 33

Contents By Builder By Ship Type

Oshima Shipbuilding Co., Ltd. delivered KAGURA, a 99,990-DWT bulk carrier, to ERICA NAVIGATION S.A. in March 2023.

Features

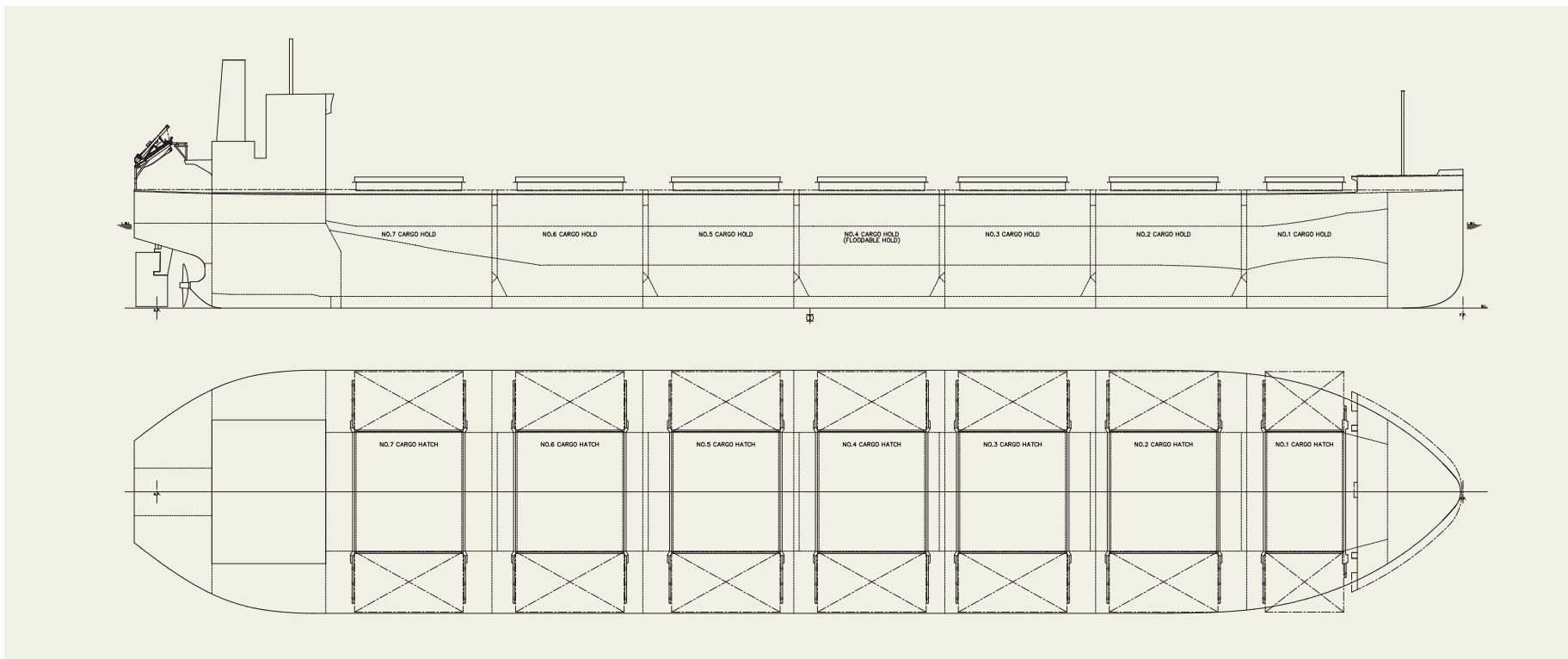
1. This vessel has an optimized hull form for carrying grain, ore, and coal, and large deadweight (99,990 MT)
2. Wide hatch cover improves cargo handling efficiency.
3. Advanced Flipper Fins & Rudder Fin which improve propulsion efficiency are installed.
4. Special bow form, Seaworthy Bow improves speed performance in rough sea conditions as compared to ordinary bows.

PRINCIPAL PARTICULARS

Length (o.a.).....	234.996 m
Breadth (mld.).....	43.00 m
Depth (mld.).....	20.05 m
Draft (mld.).....	13.829 m
Gross tonnage.....	57646
Deadweight.....	99,990 MT

Main engine	MITSUI MAN B&W 6S60ME-C10.5-EGRBP
MCR (kw x rpm)	10,000 kW x 85.0 rpm
Speed (service).....	14.30 knots
Complement.....	25
Classification	NK
Loading capacity (grain).....	123,592 m ³
Builder.....	Oshima Shipbuilding Co., Ltd.

5. SOx scrubber is installed for environmental friendliness.



SERENITY DIVA 87,396 DWT Bulk Carrier 34

[Contents](#)

[By Builder](#)

[By Ship Type](#)



SERENITY DIVA 87,396 DWT Bulk Carrier 34
[Contents](#)
[By Builder](#)
[By Ship Type](#)

Oshima Shipbuilding Co., Ltd. delivered SERENITY DIVA, a 87,396-DWT bulk carrier, to LUCRETIA SHIPPING, S.A. in June 2023.

Features

1. This vessel has an optimized hull form for carrying grain, ore, coal, and cement, and large deadweight(87,396 MT) with shallow draft (14.322m)
2. Wide hatch cover improves cargo handling efficiency.
3. Advanced Flipper Fins & Rudder Fin which improve propulsion efficiency are installed.
4. Special bow form, Seaworthy Bow improves speed

PRINCIPAL PARTICULARS

Length (o.a.).....	228.41 m	Main engine	MITSUI MAN B&W 5S60ME-C10.5-EGRBP
Breadth (mld.).....	36.50 m	MCR (kw x rpm)	8,180 kW x 84.0 rpm
Depth (mld.).....	20.39 m	Speed (service).....	14.30 knots
Draft (mld.).....	14.322 m	Complement.....	25
Gross tonnage.....	48105	Classification.....	NK
Deadweight.....	87,396 MT	Loading capacity (grain).....	106,222 m ³
		Builder.....	Oshima Shipbuilding Co., Ltd.

performance in rough sea conditions as compared to ordinary bows.

